

**CERAMIPLAS<sup>®</sup>**  
2018 Product Catalogue

# Introduction



At Ceramiplas, we believe that style and functionality are inextricably joined. Without function, there is no style; without style, functionality is overlooked. We therefore thought beyond just the functionality of space design, but of the entire project. *We answered the question:*

*"How do we design a stunning, luxury space with the most innovative finishes in the world, while still keeping the project practically achievable?"*

Ceramiplas has taken the idea of innovative tiles to the next, more thoughtful and complex level. We have curated a range of tiles to achieve not only your design goals, but your overall project goals, taking into consideration all requirements from material transport to the grand project unveiling.

Available in sizes up to 4m<sup>2</sup>, our flagship ultra large thin format is the pinnacle of architectural material design. On the design side, they are strikingly beautiful, giving the space an unignorable statement. Yet beyond the rich aesthetics, these unique ultra large formats provide functional benefits previously unseen. Most significantly, the huge surface area allows some surfaces to be covered with only a single tile, greatly reducing labour and material costs during the installation process.

Join us on our journey as we offer a solution that redefines good design.

# C Contents

04	Key Properties
05	Formats
07	Opera Series
12	Element Series
17	Clarity Series
23	Raw Series
28	Carrara Series
33	Daintree Series
38	Technical Data
41	Contact

# Key Properties



## Chemically Resistant

Resists organic, inorganic, disinfectant and detergent solvents. It can be easily cleaned maintaining the characteristics of the surface unaltered. The only product capable of attacking it is hydrofluoric acid.



## Abrasian & Wear Resistant

Resists scratches and deep abrasion. Its properties therefore remain unaltered even after intensive use and frequent cleaning.



## Flexural Strength

Ceramiplas has a high failure module and therefore has a good relative strength upon flexing (relative to similar materials).



## Frost Resistant

Thanks to an average water absorption of 0.1% Ceramiplas resists frost and adapts to all weather conditions.



## Fire Resistant

Ceramiplas does not contain organic materials. Therefore it resists fire and high temperatures. Further, it does not release smoke and does not emit toxic substances.



## Hygienic Surface

Ceramiplas is totally compatible with food substances. It does not allow the onset of molds, bacteria and fungi, nor does it release any harmful chemicals into the food.



## Chromatic Properties

Free of organic pigments, Ceramiplas is resistant to UV rays. The colors do not undergo any alteration, even if subjected to changes in climatic conditions.



## Eco-Compatibility

Ceramiplas is a totally natural product. It does not yield elements to the environment and can be easily ground and entirely recycled into other production processes.



## Anti-Graffiti

TECHNOLAM is the first anti-graffiti ceramic surface, is easily cleaned and is not affected even by the most tenacious paints.

# Formats

Ultra Large Rectangle

120 x 360cm



150 x 320cm

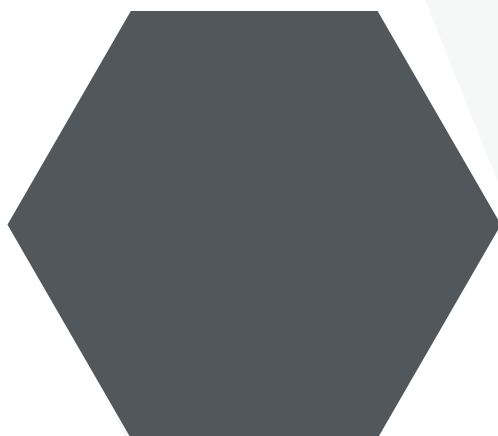


100 x 300cm





Hexagon Honeycombe  
Placement



**Hexagon**

Available in 120, 100, 80,  
50, 20, 10cm



Round Dumble Placement



**Round Dumble**

Available in 120, 100, 80,  
50, 20, 10cm

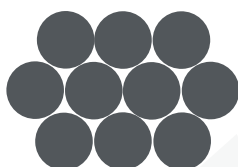


Moroccan Fish Scales  
Placement

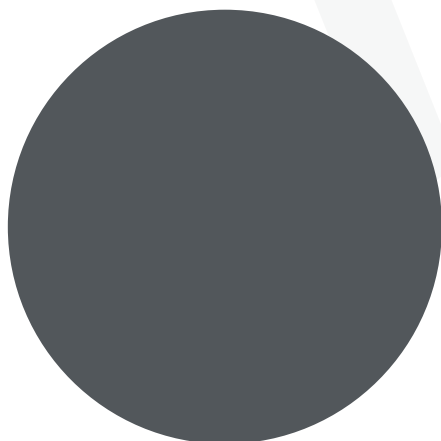


**Moroccan Fish Scales**

Available in 120, 100, 80,  
50, 20, 10cm

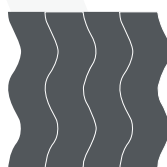


Circle Placement



**Circle**

Available in 120, 100, 80,  
50, 20, 10cm



Wave Placement



**Wave**

Available in 25 x 100cm

O pera  
Series



Beautiful Luxury

## Opera Series



Elegance. Opulence. Beauty. Our Opera series delivers a finish that demands respect with its palatial aura.

This textured finish is compiled of rows of small metallic embossed dots.

Each dot is slightly different from the next, creating a beautifully imperfect appeal that pops as the light bounces off its surface. Available in a range of modern and glamorous colours, as well as primaries, there is certain to be an option to suit your high profile projects.

Ceramiplas Opera is applied to all interior and exterior surfaces, finding frequent resting places in hotel foyers, hallways, private living spaces and bathrooms, but often used as an eye catching exterior cladding option.

Enquire about Ceramiplas Opera now: [ceramiplas@plastral.com.au](mailto:ceramiplas@plastral.com.au)

Physical chemical properties	Standard / Method	Explanation
Dimension	TCeramiplas	Maximum excursion on the side +/- 0,5 mm
Dimension	TCeramiplas	Maximum excursion on the diagonal +/- 0,5 mm
Weight	TCeramiplas	Average value 7.8 kg / m <sup>2</sup>
Surface quality (% of parts without defects)	ISO 10545-2	> 95%
Water absorption	ISO 10545-3	Average value 0.1% (<0.3%)
Water absorption	ASTM C373	Average value 0.1% (<0.3%)
Breaking force	ISO 10545-4	Average value 700
Flexural strength in N / mm	ISO 10545-4	Average value 90 (samples size 400x100mm)
MOHS scale hardness	UNI EN 101	≥ 5
Resistance to deep abrasion	ISO 10545-6	≤ 175 mm <sup>3</sup>
Linear thermal expansion coefficient (10 <sup>-6</sup> / °C)	ISO 10545-8	6.6
Resistance to thermal changes	ISO 10545-9	Partial change of the surface
Chemical resistance	ISO 10545-13	Class 5
Resistance to stains	ISO 10545-14	Average value 0.8
Resistance to frost	ISO 10545-12	A2-s1, d0
Impact resistance by coeff. of return	ISO 10545-5	
Friction coefficient	DIN 51130	
Friction coefficient	ASTM C-1028	
Reaction to fire	EN 13501 (rev 2005)	

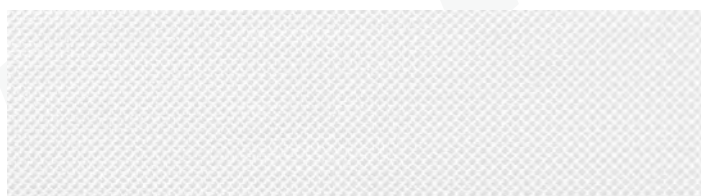


## Available Colours

---



Black



White



Steel



Coral



Silver



Gold

pera  
Series



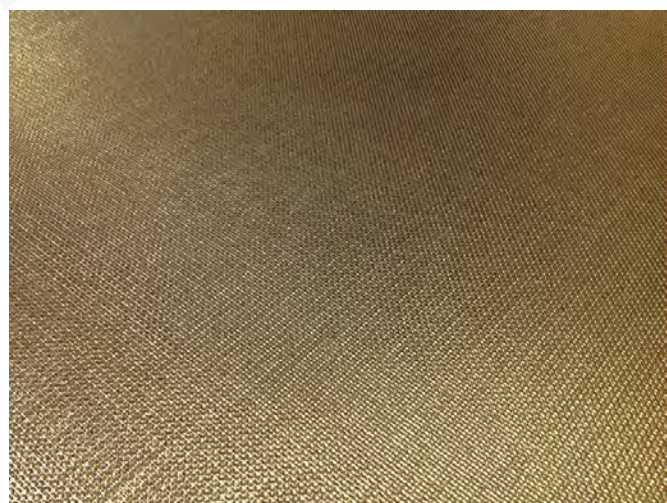
**Project Example:** Opera Gold and Silver, Bathroom.



**Project Example:** Opera in Black and Silver  
Round Dumble Format, Flooring



**Project Example:** Opera in Coral, Bedroom



**Project Example:** Opera in Gold, Flooring

Element  
Series



Rugged Beauty



## Element Series

Element  
Series

What if you could bring the elements from the beautiful rugged Australian landscape into our livingrooms? The unmistakable hue of a rusted out Holden in the paddock or the Australian Basalt stone can now be stand our features of your next project with Ceramiplas Element Series.

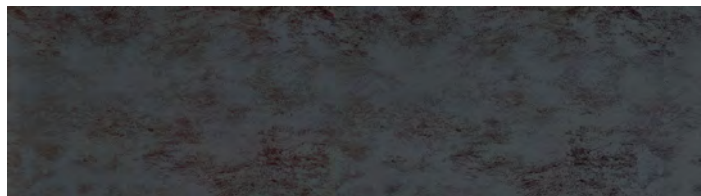
This rustic finish features a matte feel base colour layer with a gloss finish over- layer in a complementary hue. As you run your finger along the surface of these you can feel the transition of the layers from matte to gloss, highlighting the genius and complexity in manufacturing such a material. Available in a range of earthy colours, Ceramiplas Element will give any indoor or outdoor surface the refined but rugged beauty impact that won't be forgotten.

Enquire about Ceramiplas Element now: [ceramiplas@plastral.com.au](mailto:ceramiplas@plastral.com.au)

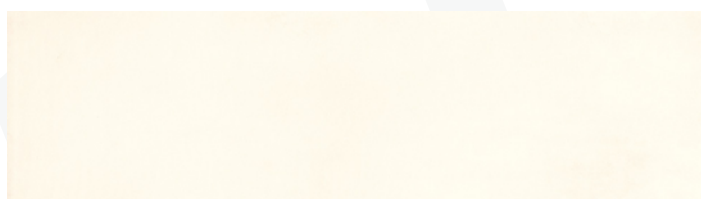
Physical chemical properties	Standard / Method	Explanation
Dimension	Ceramiplas	Maximum excursion on the side +/- 0,5 mm
Dimension	Ceramiplas	Maximum excursion on the diagonal +/- 1 mm
Weight	Ceramiplas	Average value 7 kg / m <sup>2</sup>
Surface quality (% of parts without defects)	ISO 10545-2	> 95%
Water absorption	ISO 10545-3	Average value 0.1% (<0.3%)
Water absorption	ASTM C373	Average value 0.1% (<0.3%)
Breaking force	ISO 10545-4	-
Flexural strength in N / mm	ISO 10545-4	Average value 50 (samples size 200x300mm)
MOHS scale hardness	UNI EN 101	≥ 6
Resistance to deep abrasion	ISO 10545-6	≤ 175 mm <sup>3</sup>
Linear thermal expansion coefficient (10 <sup>-6</sup> / °C)	ISO 10545-8	6.6
Resistance to thermal changes	ISO 10545-9	Resists
Chemical resistance	ISO 10545-13	No visible effect
Resistance to stains	ISO 10545-14	Class 5
Resistance to frost	ISO 10545-12	Resists
Impact resistance by coeff. of return	ISO 10545-5	Average value 0.6
Friction coefficient	DIN 51130	R9
Friction coefficient	ASTM C-1028	μ> 0.6
Reaction to fire	EN 13501 (rev 2005)	A1 (Decision 96/603 / EC and its amendments)

## Available Colours

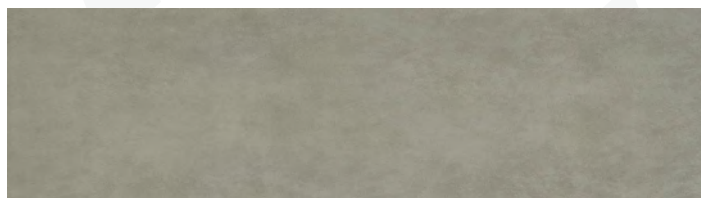
---



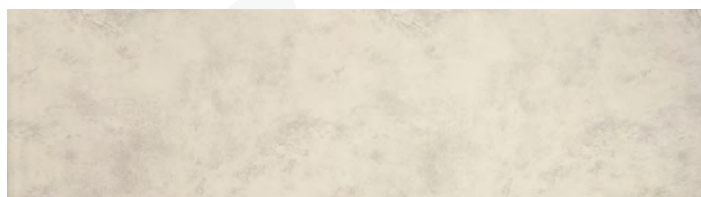
Black



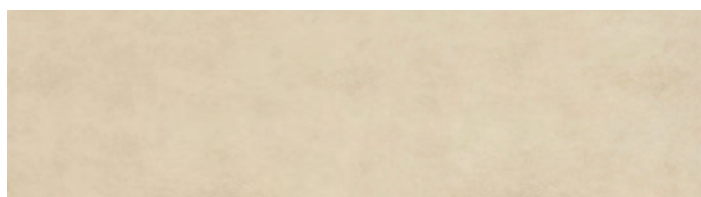
White



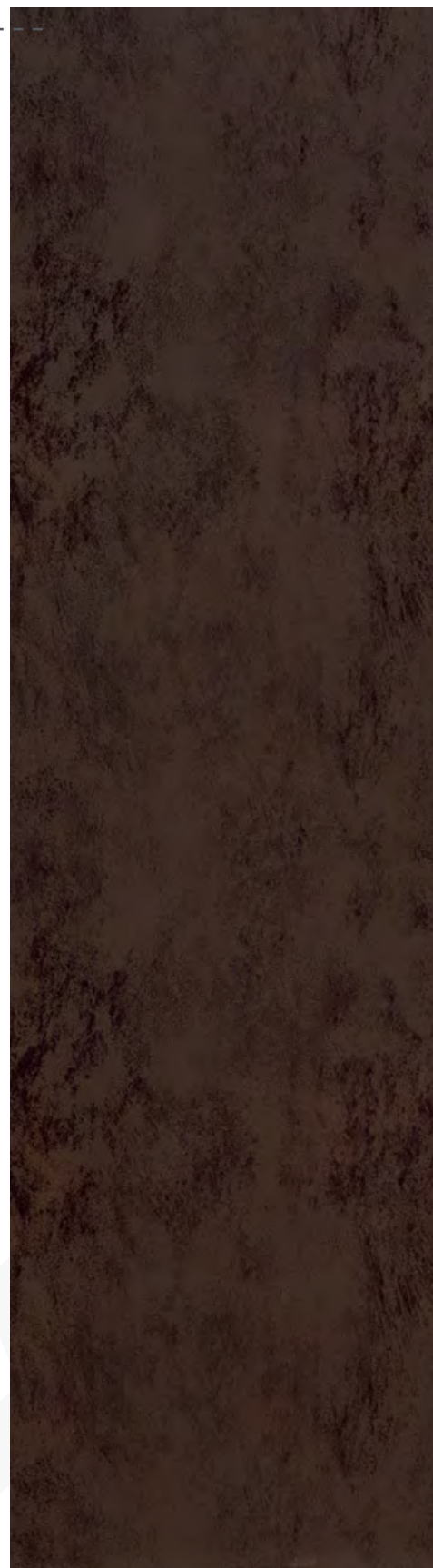
Grey



Pearl



Ivory



Rust

Element  
Series



**Project Example:** Element in Rust and Ivory, Bathroom



**Project Example:** Element in Pearl, Black and Rust, Kitchen



**Project Example:** Element in Ivory, Livingroom floor



**Project Example:** Element in Rust, Vanity



Clarity  
Series



Plain Finish, Vibrant Spaces

## Clarity Series



Bring your space to life with this stunning yet simple range of matte finish ceramic tiles. Our Clarity range offers our largest selection of sophisticated flat colour finishes. Consisting of 14 base and modern colours, from plain white to unique, standout colours such as meadow green, there will be a solution for you in this beautiful range.

Although regularly used in private houses, the Clarity range has been particularly popular in and specified for large commercial projects, including schools, hotels, hospitals and aged care facilities.

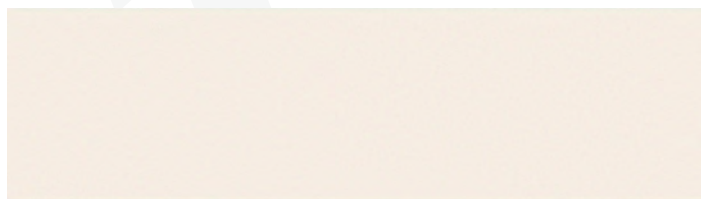
Enquire about Ceramiplas Clarity now: [ceramiplas@plastral.com.au](mailto:ceramiplas@plastral.com.au)

Physical chemical properties	Standard / Method	Explanation
Dimension	Ceramiplas	Maximum excursion on the side +/- 0,5 mm
Dimension	Ceramiplas	Maximum excursion on the diagonal +/- 0,5 mm
Weight	Ceramiplas	Average value 7 kg / m <sup>2</sup>
Surface quality (% of parts without defects)	ISO 10545-2	> 95%
Water absorption	ISO 10545-3	Average value 0.1% (<0.3%)
Water absorption	ASTM C373	Average value 0.1% (<0.3%)
Breaking force	ISO 10545-4	-
Flexural strength in N / mm	ISO 10545-4	Average value 50 (samples size 200x300mm)
MOHS scale hardness	UNI EN 101	≥ 6
Resistance to deep abrasion	ISO 10545-6	≤ 175 mm <sup>3</sup>
Linear thermal expansion coefficient (10 <sup>-6</sup> / °C)	ISO 10545-8	6.6
Resistance to thermal changes	ISO 10545-9	Resists
Chemical resistance	ISO 10545-13	No visible effect
Resistance to stains	ISO 10545-14	Class 5
Resistance to frost	ISO 10545-12	Resists
Impact resistance by coeff. of return	ISO 10545-5	Average value 0.6
Friction coefficient	DIN 51130	R9
Friction coefficient	ASTM C-1028	μ> 0.6
Reaction to fire	EN 13501 (rev 2005)	A1 (Decision 96/603 / EC and its amendments)

## Available Colours

---

Clarity  
Series



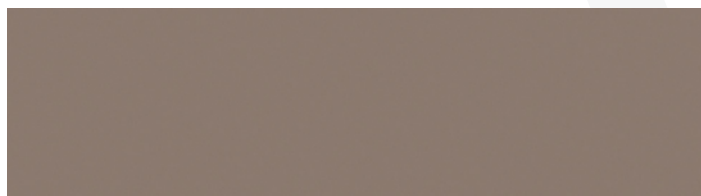
Snow



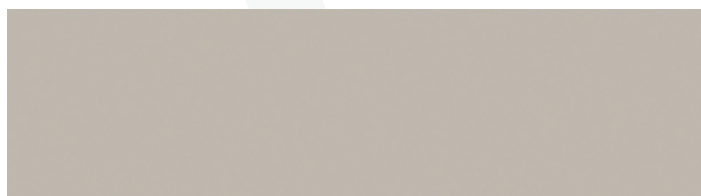
Ivory



Bran



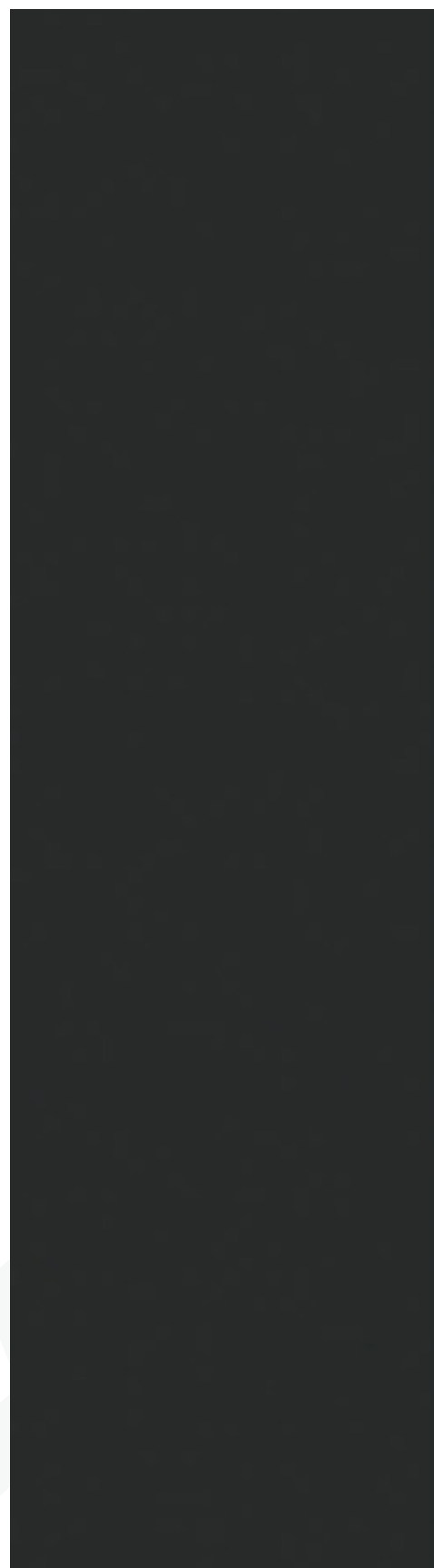
Turtledove



Pearl



White



Black

## Available Colours

---

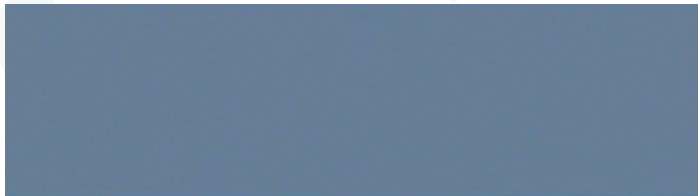
Clarity  
Series



Water



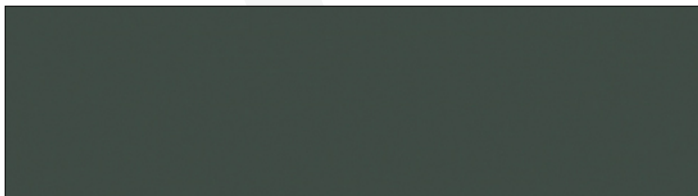
Meadow



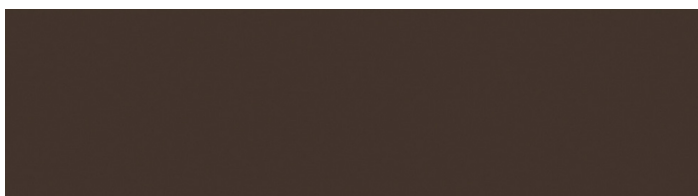
Indigo



Royal Blue



Larch



Earth



Coral

Clarity  
Series



**Project Example:** Clarity in Earth, Livingroom

**Project Example:** Clarity in Water, Ivory & Bran, External Cladding



**Project Example:** Clarity in Meadow, Pearl & Snow (Round Dumble) Hotel Foyer



**Project Example:** Clarity in Black, Staircase

Raw  
Series



The Foundation Of Minimalism



## Raw Series

R<sub>aw</sub>  
Series

Replicating a raw material at its most purest form, these cement-like finishes offer the ultimate solution for the minimalist brief. Having a similar look and feel as polished concrete, these tiles are far more superior given it does not make the surface too firm, provides better insulation and is not prone to rotting and cracking.

The colour pallet in this incredible range reflects 3 varying shades of concrete. From private living spaces to stunning retail fitouts, Ceramiplas Raw has found and created the perfect home for itself.

Enquire about Ceramiplas Raw now: [ceramiplas@plastral.com.au](mailto:ceramiplas@plastral.com.au)

Physical chemical properties	Standard / Method	Explanation
Dimension	Ceramiplas	Maximum excursion on the side +/- 0,5 mm
Dimension	Ceramiplas	Maximum excursion on the diagonal +/- 1 mm
Weight	Ceramiplas	Average value 7 kg / m <sup>2</sup>
Surface quality (% of parts without defects)	ISO 10545-2	> 95%
Water absorption	ISO 10545-3	Average value 0.1% (<0.3%)
Water absorption	ASTM C373	Average value 0.1% (<0.3%)
Breaking force	ISO 10545-4	-
Flexural strength in N / mm	ISO 10545-4	Average value 50 (samples size 200x300mm)
MOHS scale hardness	UNI EN 101	≥ 6
Resistance to deep abrasion	ISO 10545-6	≤ 175 mm <sup>3</sup>
Linear thermal expansion coefficient (10 <sup>-6</sup> / °C)	ISO 10545-8	6.6
Resistance to thermal changes	ISO 10545-9	Resists
Chemical resistance	ISO 10545-13	No visible effect
Resistance to stains	ISO 10545-14	Class 5
Resistance to frost	ISO 10545-12	Resists
Impact resistance by coeff. of return	ISO 10545-5	Average value 0.6
Friction coefficient	DIN 51130	R9
Friction coefficient	ASTM C-1028	μ> 0.6
Reaction to fire	EN 13501 (rev 2005)	A1 (Decision 96/603 / EC and its amendments)



## Available Colours

---



Lead





Turtledove



Grey

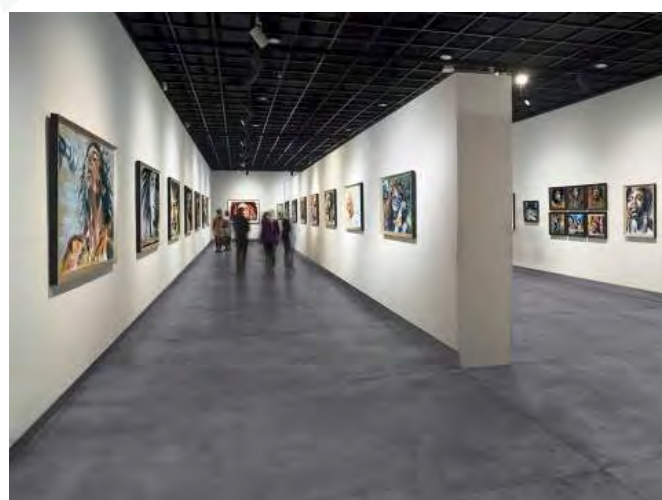
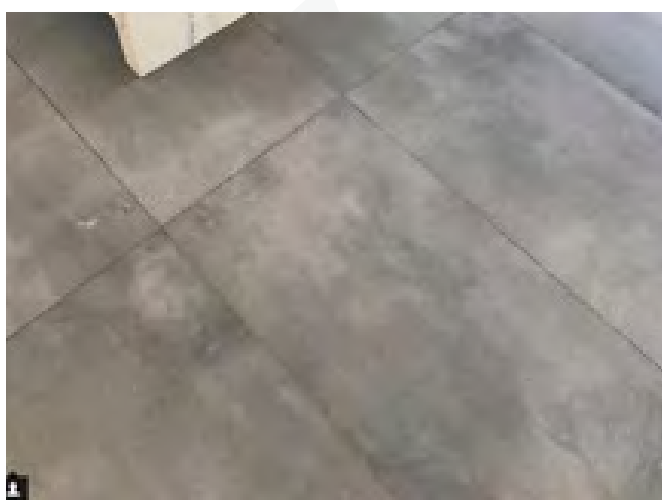


Raw  
Series



**Project Example:** Raw in Grey, Lead & Turtledove, Hotel Penthouse

**Project Example:** Raw in Turtledove, Hotel Common Area



**Project Example:** Raw in Turtledove, Flooring

**Project Example:** Raw in Lead, Art Gallery

Carrara  
Series



Classic Stones Of Italy

## Carrara Series



The Carrara Series is our flagship range of precious stone finishes inspired by the traditional Italian stones originating in the area sharing the same name. Timeless luxury pops front of mind with each finish in this stunning range, transforming any space into one that will be remembered by visitors and cherished by owners. There are no limits to the applications of this finish, supported by the wide range of beautiful examples provided in the images herein.

Based on the most popular luxury Italian stones available, there are a total of 7 finishes available in the Carrara Series. Headed up by our most popular finish, the Calcatta, we are confident we will have a solution for your brief.

Enquire about Ceramiplas Carrara now: [ceramiplas@plastral.com.au](mailto:ceramiplas@plastral.com.au)

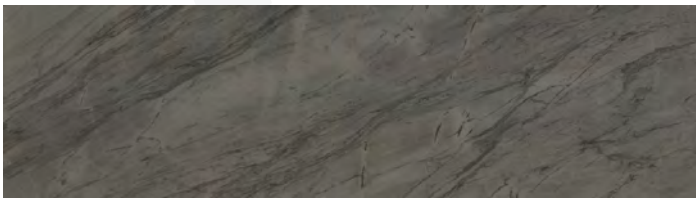
Physical chemical properties	Standard / Method	Explanation
Dimension	Ceramiplas	Maximum excursion on the side +/- 0,5 mm
Dimension	Ceramiplas	Maximum excursion on the diagonal +/- 1 mm
Weight	Ceramiplas	Average value 7 kg / m <sup>2</sup>
Surface quality (% of parts without defects)	ISO 10545-2	> 95%
Water absorption	ISO 10545-3	Average value 0.1% (<0.3%)
Water absorption	ASTM C373	Average value 0.1% (<0.3%)
Breaking force	ISO 10545-4	-
Flexural strength in N / mm	ISO 10545-4	Average value 50 (samples size 200x300mm)
MOHS scale hardness	UNI EN 101	≥ 6
Resistance to deep abrasion	ISO 10545-6	≤ 175 mm <sup>3</sup>
Linear thermal expansion coefficient (10 <sup>-6</sup> / °C)	ISO 10545-8	6.6
Resistance to thermal changes	ISO 10545-9	Resists
Chemical resistance	ISO 10545-13	No visible effect
Resistance to stains	ISO 10545-14	Class 5
Resistance to frost	ISO 10545-12	Resists
Impact resistance by coeff. of return	ISO 10545-5	Average value 0.6
Friction coefficient	DIN 51130	R9
Friction coefficient	ASTM C-1028	μ> 0.6
Reaction to fire	EN 13501 (rev 2005)	A1 (Decision 96/603 / EC and its amendments)



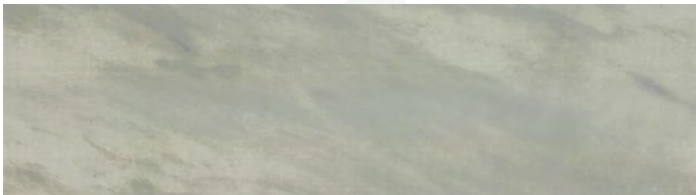
## Available Colours

---

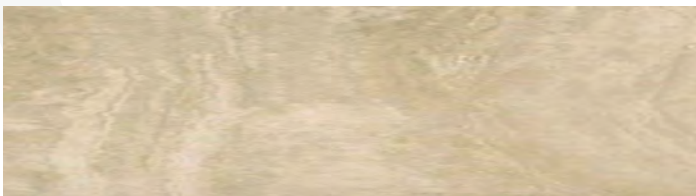
Carrara  
Series



Black Bardiglio



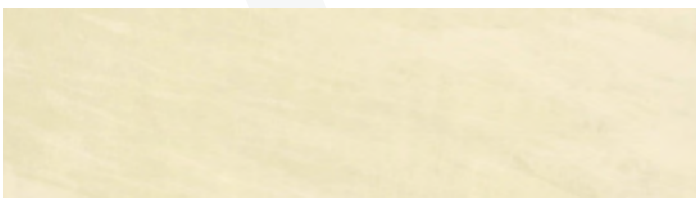
Grey Rosewood



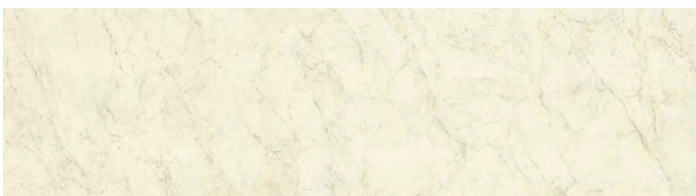
Roman Travertine



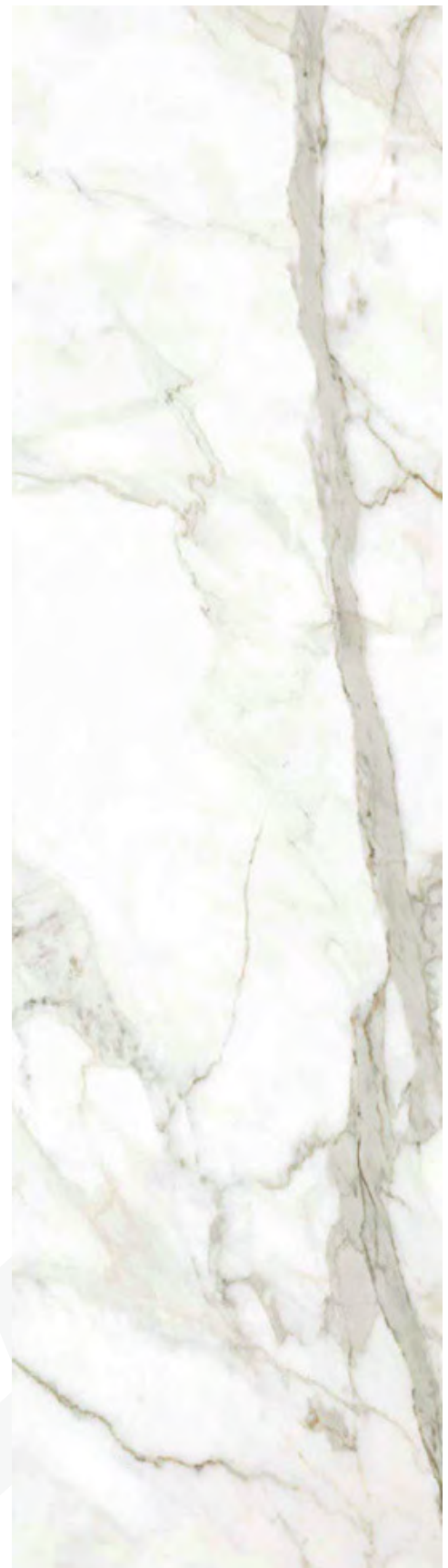
Classic Ivory Travertine



Beige Rosewood



Stone of Iseo



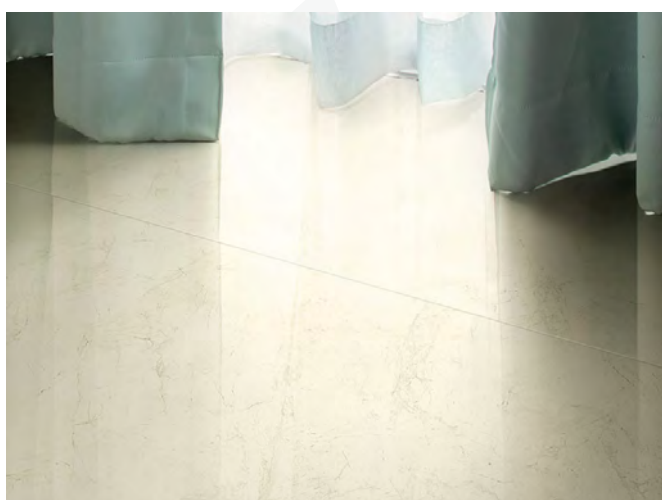
Calcatta

Carrara  
Series



Project Example: Carrara in Calcatta, Livingroom

**Project Example:** Carrara in Black Bardiglio, Retail Shop floor



**Project Example:** Carrara in Beige  
Rosewood, Flooring



**Project Example:** Carrara in Grey  
Rosewood, Flooring



Daintree  
Series



Take A Walk Through The Forest

## Daintree Series



Inspired by the warmth and simplicity of wood, the Daintree range represents the natural aspects of this traditional material. These unique woodgrain designs ideally compliment any architecturally inspired natural environment.

With nature in mind, the Daintree Series emulates the beauty and elegance of natural timber products without the fuss of any long term upkeep. It is hard and smooth, but unlike wood, is non-porous and therefore the perfect wood alternative for any eco inspired project.

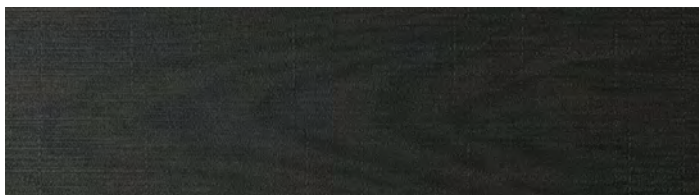
This comforting series is primarily used in floor applications but is just as unique when used on wall applications. It will add just the organic touch you require to all private residential or commercial spaces.

Enquire about Ceramiplas Daintree now: [ceramiplas@plastral.com.au](mailto:ceramiplas@plastral.com.au)

Physical chemical properties	Standard / Method	Explanation
Dimension	Ceramiplas	Maximum excursion on the side +/- 0,5 mm
Dimension	Ceramiplas	Maximum excursion on the diagonal +/- 1 mm
Weight	Ceramiplas	Average value 7 kg / m <sup>2</sup>
Surface quality (% of parts without defects)	ISO 10545-2	> 95%
Water absorption	ISO 10545-3	Average value 0.1% (<0.3%)
Water absorption	ASTM C373	Average value 0.1% (<0.3%)
Breaking force	ISO 10545-4	-
Flexural strength in N / mm	ISO 10545-4	Average value 50 (samples size 200x300mm)
MOHS scale hardness	UNI EN 101	≥ 6
Resistance to deep abrasion	ISO 10545-6	≤ 175 mm <sup>3</sup>
Linear thermal expansion coefficient (10 <sup>-6</sup> / °C)	ISO 10545-8	6.6
Resistance to thermal changes	ISO 10545-9	Resists
Chemical resistance	ISO 10545-13	No visible effect
Resistance to stains	ISO 10545-14	Class 5
Resistance to frost	ISO 10545-12	Resists
Impact resistance by coeff. of return	ISO 10545-5	Average value 0.6
Friction coefficient	DIN 51130	R9
Friction coefficient	ASTM C-1028	μ> 0.6
Reaction to fire	EN 13501 (rev 2005)	A1 (Decision 96/603 / EC and its amendments)

## Available Colours

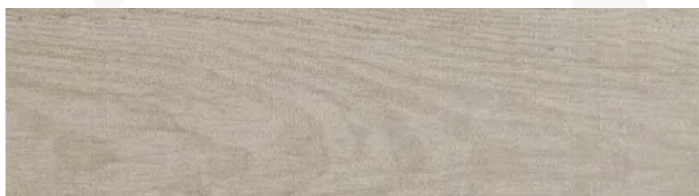
---



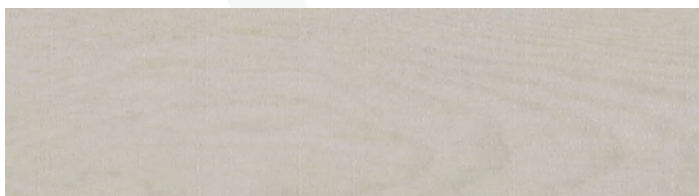
Blackwood



Oak



Quandong



Lime



Sweetgum

Daintree  
Series



**Project Example:** Daintree in Sweetgum, Bedroom Floor

---



**Project Example:** Daintree in Sweetgum, Bathroom Floor



**Project Example:** Daintree in Quandong, Flooring

# P roduct Specification



Technical Data

## Ceramiplas 3.5mm

Innovative porcelain material stoneware with unglazed surface produced in sheets with dimensions 3000 x 1000mm and a thickness of 3mm, obtained from a mixture of clayey raw materials of high quality and purity (clays clear, granite and metamorphic rocks, feldspar and ceramic pigments with high colour rendering) wet ground. The dough is then colored and subsequently dried in order to create, by atomisation, a powder of the grain size to withstand the rolling process. The lamination process is obtained by dry pressing on a band with strength equal to 15,000 tonnes and finally subjected to prolonged cooking at a temperature of about 1,200°C in order to obtain the characteristics techniques required by the standards in force.

So as to make the material suitable for flooring, on the back of slab, a structural reinforcement composed of a mat of glass fiber of a thickness 0.5mm is applied with a suitable bi-component glue.

**Thickness:** 3.5mm (3 + 0.5)

**Standard Size:** 1000x3000mm rectangle, with others available in accordance with those presented herein.

**Weight:** 8.2kg/sqm

### Series Name and Colours:

OPERA: Black, White, Steel, Silver, Gold & Coral

ELEMENTS: Black, White, Grey, Pearl, Ivory & Rust

CLARITY: Snow, Ivory, Bran, Turtledove, Pearl, Black & White

CLARITY COLOURS: Water, Meadow, Indigo, Royal Blue, Larch, Earth & Coral

RAW: Black, Grey, Mocca, Beige & Pearl

CARRARA: Calcatta, Black Bardiglio, Grey Rosewood, Beige Rosewood, Roman Travertine, Classic Ivory Travertine, Stone of Iseo

DAINTREE: Blackwood, Oak, Quandong, Lime, Sweetgum

- Water absorption according to EN ISO 10545.3. 0.1%
- Classification according to EN 13006 Group 14411/ISO

### Slip Resistance

- Method BCRA: > 0.40 (leather / dry rubber / wet)
- Method DIN 51130: R9 for all series except Daintree R10.
- Method DIN 51097: Class A
- Method ASTM C-1028: u > 0.6 dry

Disposal of toxic / harmful ISO 10545.15

- No cession

### Fire Resistance

- (DM 14/01/85, 15/03/05 DM, method ISO / DIS 1182.2) Italian Standards
  - (Dir. 89/106/EC, Dec.2000/147CE, EN 13501-1, EN 13823 method) European Union
- Ceramiplas 3.5 mm: A2. s1, d0 (wall installation) / A2fl. s1 (floor installation)

### Recommended Applications

Covering internal and external, internal flooring, outdoor flooring with a slip resistance only suitable for single use, furnishing and design, any coating applications demanding a high degree of aesthetics combined with extreme ease of cleaning and maintenance.

## Ceramiplas 5.5mm

Innovative porcelain stoneware with unglazed surface produced in slabs of 3000 x 1000mm and a thickness of 5.5mm, obtained from a mixture of clayey raw materials of high quality and purity (clays clear, granite and metamorphic rocks, feldspar and ceramic pigments with high colour rendering) wet ground. The dough is then coloured and subsequently dried in order to create, by atomisation, a powder of the grain size to withstand the rolling process.

The lamination process is obtained by dry pressing on a tape with streng. The thickness of the plate is 5.5mm and its particular structure makes the product ideal even if screed conditions are not perfect.

**Thickness:** 5.5mm (5 + 0.5)

**Standard Size:** 1000x3000mm Rectangle, with others available in accordance with those presented herein

**Weight:** 14kg/sqm

### Series Name and Colours:

OPERA: Black, White, Steel, Silver, Gold & Coral

ELEMENTS: Black, White, Grey, Pearl, Ivory & Rust

CLARITY: Snow, Ivory, Bran, Turtledove, Pearl, Black & White

CLARITY COLOURS: Water, Meadow, Indigo, Royal Blue, Larch, Earth & Coral

RAW: Black, Grey, Mocca, Beige & Pearl

CARRARA: Calcatta, Black Bardiglio, Grey Rosewood, Beige Rosewood, Roman Travertine, Classic Ivory Travertine, Stone of Iseo

DAINTREE: Blackwood, Oak, Quandong, Lime, Sweetgum

- Water absorption according to EN ISO 10545.3. 0.1%
- Classification according to EN 13006 Group 14411/ISO Bla

### Slip Resistance

- Method BCRA: > 0.40 (leather / dry rubber / wet)
- Method DIN 51130: R9 for all series except Daintree R10.
- Method DIN 51097: Class A
- Method ASTM C-1028: u > 0.6 dry

Disposal of toxic / harmful ISO 10545.15

- No assignment

### Fire Resistance

- (DM 14/01/85, 15/03/05 DM, method ISO / DIS 1182.2) Italian Standards

Ceramiplas 5.5 mm: class 1

- (Dir. 89/106/EC, Dec.2000/147CE, EN 13501-1, EN 13823 method) European Union

Ceramiplas 5.5 mm: A2. s1, d0 (wall installation) / A2fl. s1 (floor installation)

### Recommended Applications

Covering internal and external, internal flooring, outdoor flooring with a slip resistance only suitable for single use, furnishing and design, any coating applications demanding a high degree of aesthetics combined with extreme ease of installation, cleaning and maintenance.



## CERAMIPLAS®

### **Sydney**

#### **Head Office & DC**

130 Denison Street  
Hillsdale NSW 2036

**T:** 02 9695 3200

**E:** [info@plastral.com.au](mailto:info@plastral.com.au)

### **Melbourne**

#### **VIC Office & DC**

370 Darebin Road  
Thornbury VIC 3071

**T:** 03 9490 0111

**E:** [info@plastral.com.au](mailto:info@plastral.com.au)

### **Brisbane**

#### **QLD Office & DC**

U6/112 Cullen Ave West  
Eagle Farm QLD 4009

**T:** 07 3623 2455

**E:** [info@plastral.com.au](mailto:info@plastral.com.au)

### **Perth**

#### **WA Office & DC**

247 Camboon Road  
Malaga WA 6090

**T:** 08 9248 6565

**E:** [info@plastral.com.au](mailto:info@plastral.com.au)

### **Auckland**

#### **NZ Office**

Building 10  
666 Great South Road  
Penrose 1061

**T:** +64 9571 0636

**E:** [info@plastral.com.au](mailto:info@plastral.com.au)

Your Ceramiplas Partner